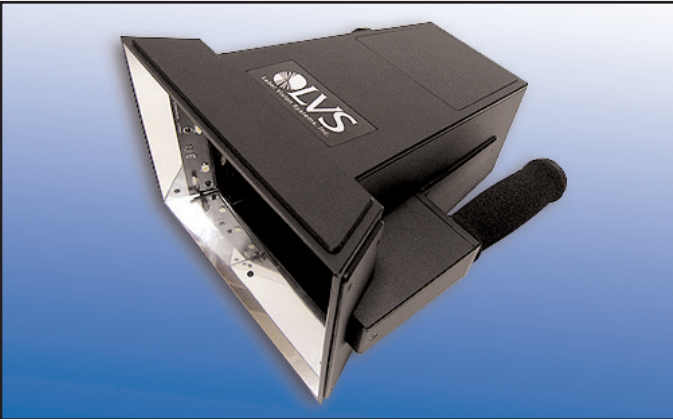


INTEGRA 9550 handheld ISO Verifier

The INTEGRA 9550 is a fast and very reliable way to check Print Quality of barcodes in any printing environment. This system is designed to be suspended above the work area and allow operators easy unit placement on any barcode especially the smallest of barcodes on the largest of surfaces. The INTEGRA 9550 will ISO/ANSI verify both 1D linear and 2D Matrix bar codes.



The INTEGRA 9550 readhead offers a 2.0" High x 2.6" Wide field of view and is capable of ISO/ANSI grade barcodes down to 6.9Mil X dimension (.0069" Narrow bar Width) for linear bar codes and 10.1 X dimension (.0101" cell size) for 2D barcodes including Datamatrix (ECC200 + GS1), Databar with composit componet (Formally RSS Composite), PDF417, QR Code and others.

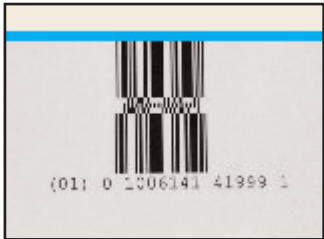
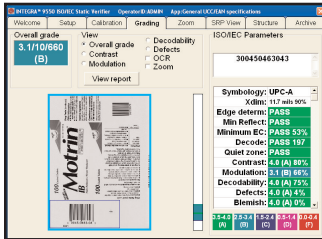
The INTEGRA 9550 unit is extremely fast and capable of grading barcodes within seconds, displaying the print quality result with the corresponding quick user reference color code for that grade.



A user can define an acceptance level in the system. This allows QA departments to set quality control standards for their company and ensure operators follow the standards. The system screen can display a simple PASS (in green) or FAIL (in red). If the operator sees red he calls QA for help.

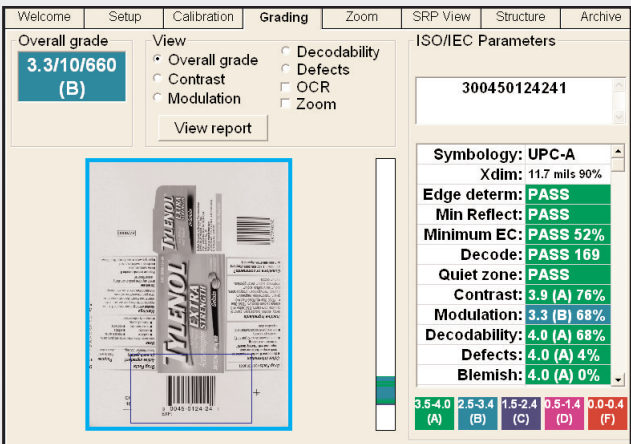
Once an error is detected the system highlights on-screen a color coded grade and can indicate where the actual fault is, which allows users to quickly identify and rectify print problems.

INTEGRA 9550 handheld ISO Verifier



The INTEGRA 9550 software is simple yet very in-depth. As described above the system can be set for simple PASS/FAIL mode or Standard mode allowing full disclosure of faults highlighted on-screen, Scan Reflectance Profile analysis, traditional parameters, full dimensional profile of every bar and space and of course the system automatically archives every new barcode it grades.

Once the grade is displayed on-screen the system saves it for later review or reporting purposes. If users want the full report of every analytical test and measurement the INTEGRA 9550 can output the entire data file to a serial port for easy retrieval. This allows users the ability to create any reporting type they require in their own reporting software (Excel, Crystal etc...).



Large text, color value grading and user friendly interface are designed with the operator in mind. Continued..

Warranty

Label Vision Systems, Inc. is pleased to offer a full (1) one year Return to Base warranty on all labor and materials for LVS products.

Label Vision Systems will provide telephone support (5) five days a week 9 a.m. to 4 p.m. EST.

Minimum PC Requirements

(Customer Supplied)
 PC Intel P4 2.8Ghz
 500 MB RAM
 Windows XP Pro
 20 Gig Disk Space

Supported Symbologies

Code 39	UPC-A & E
I 2 of 5 (ITF)	EAN-8 & 13
UCC/EAN 128	ITF-14
Code 128	Pharmacode
Codabar	Data Matrix
GS1 Databar	PDF-417
GS1 Databar Limited	Micro PDF-417
GS1 Databar Linear	OCR Validation
GS1 Databar Stacked	QR Code
Composite	
(CCA/CCB/CCC)	

Inputs / Outputs

USB 2.0 port
 10/100 Ethernet

Camera

Monochrome Camera
 2.1 mega-pixels

Field of View (FOV)

16mm 2.6" x 2.0"
 Min xdim = 5.8 mil

8mm 6.25" x 4.5"
 Min xdim = 13 mil

ISO/IEC/ANSI Verification

Edge Determination
 Minimum Reflectance
 Minimum Edge Contrast
 Decode
 Symbol Contrast
 Modulation
 Decodability
 Defects (spots / voids)
 Quiet Zone
 Blemish
 Validation of Human Readable

Standard Compliance

ISO 15415
 ISO 15416
 ISO 15426 (1 and 2)
 General GS1 Application
 Specification (GENSPEC)
 21 CFR PART 11 COMPLIANT READY
 MIL STD 130L
 ITS 199-002 (7-02)
 UID Guidelines 07/29/03

